



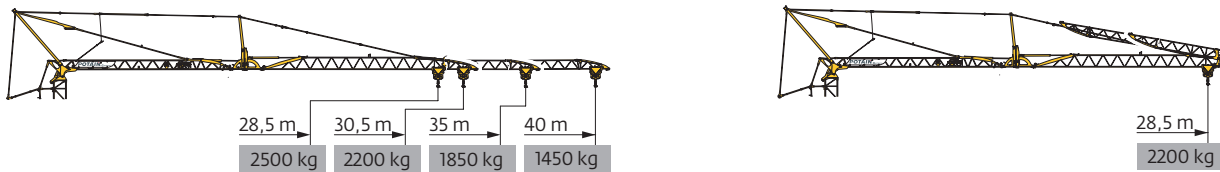
# Potain Igo T 70



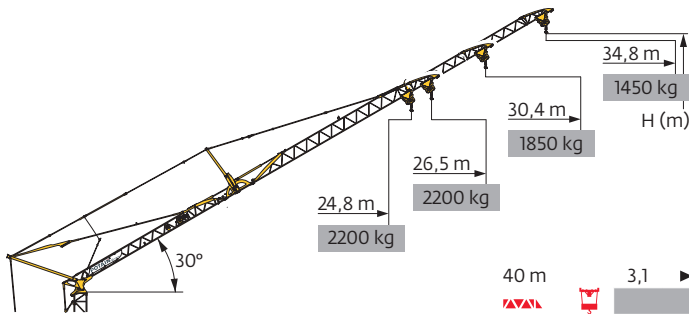










EN 14439 C25-D25  
EN 14439 C50-D50  
FEM 1.001-A3

Courbes de charges / Lastkurven / Load curves / Curvas de cargas / Curve di carico  
Curvas de carga / Кривые нагрузок

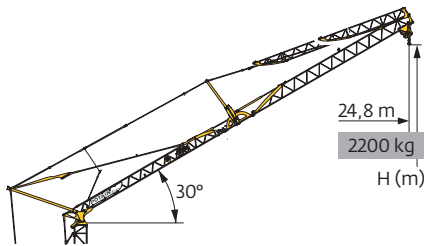


|        |     |   |      |      |      |      |      |      |      |      |      |      |      |      |      |      |    |
|--------|-----|---|------|------|------|------|------|------|------|------|------|------|------|------|------|------|----|
| 40 m   | 3,1 | ▶ | 16   | 18   | 20   | 22   | 24   | 26   | 26,2 | 28   | 30   | 32   | 34   | 36   | 38   | 40   | m  |
| ▲▲▲    | ▲▲▲ |   | 4000 | 3470 | 3060 | 2720 | 2450 | 2220 | 2200 | 2030 | 1860 | 1720 | 1600 | 1490 | 1390 | 1300 | kg |
| ▲▲▲    | ▲▲▲ |   |      |      |      |      |      |      | 2200 | 2030 | 1860 | 1720 | 1600 | 1490 | 1390 | 1300 | kg |
| ▲▲▲    | ▲▲▲ |   |      |      |      |      |      |      | 2200 | 2050 | 1900 | 1750 | 1650 | 1550 | 1450 |      | kg |
| 35 m   | 3,1 | ▶ | 17,3 | 18   | 20   | 22   | 24   | 26   | 28   | 28,4 | 30   | 32   | 34   | 35   |      |      | m  |
| ▲▲▲    | ▲▲▲ |   | 4000 | 3800 | 3350 | 2990 | 2690 | 2440 | 2230 | 2200 | 2055 | 1900 | 1760 | 1700 |      |      | kg |
| ▲▲▲    | ▲▲▲ |   |      |      |      |      |      |      |      | 2200 | 2055 | 1900 | 1760 | 1700 |      |      | kg |
| ▲▲▲    | ▲▲▲ |   |      |      |      |      |      |      |      | 2200 | 2050 | 1900 | 1760 | 1850 |      |      | kg |
| 30,5 m | 3,1 | ▶ | 18,5 | 20   | 22   | 24   | 26   | 28   | 30   | 30,5 |      |      |      |      |      |      | m  |
| ▲▲▲    | ▲▲▲ |   | 4000 | 3650 | 3250 | 2930 | 2670 | 2440 | 2240 | 2200 |      |      |      |      |      |      | kg |
| ▲▲▲    | ▲▲▲ |   |      |      |      |      |      |      |      | 2200 |      |      |      |      |      |      | kg |
| ▲▲▲    | ▲▲▲ |   |      |      |      |      |      |      |      | 2200 |      |      |      |      |      |      | kg |
| 28,5 m | 3,1 | ▶ | 19,2 | 20   | 22   | 24   | 26   | 28   | 28,5 |      |      |      |      |      |      |      | m  |
| ▲▲▲    | ▲▲▲ |   | 4000 | 3810 | 3400 | 3070 | 2790 | 2550 | 2500 |      |      |      |      |      |      |      | kg |
| ▲▲▲    | ▲▲▲ |   |      |      |      |      |      |      | 2200 |      |      |      |      |      |      |      | kg |
| ▲▲▲    | ▲▲▲ |   |      |      |      |      |      |      | 2200 |      |      |      |      |      |      |      | kg |
| 40 m   | 3,1 | ▶ | 16,7 | 18   | 20   | 22   | 24   | 26   | 27,4 | 28   | 28,5 |      |      |      |      |      | m  |
| ▲▲▲    | ▲▲▲ |   | 4000 | 3660 | 3220 | 2870 | 2590 | 2350 | 2200 | 2145 | 2100 |      |      |      |      |      | kg |
| ▲▲▲    | ▲▲▲ |   |      |      |      |      |      |      | 2200 | 2145 | 2100 |      |      |      |      |      | kg |
| ▲▲▲    | ▲▲▲ |   |      |      |      |      |      |      | 2200 |      |      |      |      |      |      |      | kg |



|   |   |      |      |      |      |      |      |    |
|---|---|------|------|------|------|------|------|----|
| 40 m  | 3,1 ▶   | 22,9 | 24,6 | 28   | 31   | 34,8 | m    |    |
|  |  |      | 2200 | 2000 | 1715 | 1510 | 1300 | kg |
|   |   |      |      | 2200 | 1900 | 1650 | 1450 | kg |
| 35 m  | 3,1 ▶   | 24,7 | 26,4 | 28   | 30,4 |      | m    |    |
|  |  |      | 2200 | 2020 | 1880 | 1700 |      | kg |
|   |   |      |      | 2200 | 2050 | 1850 |      | kg |
| 30,5 m  | 3,1 ▶   |      | 26,5 |      |      |      | m    |    |
|  |  |      |      | 2200 |      |      |      | kg |
|   |   |      |      | 2200 |      |      |      | kg |
| 28,5 m  | 3,1 ▶   |      | 24,8 |      |      |      | m    |    |
|  |  |      |      | 2200 |      |      |      | kg |
|   |   |      |      | 2200 |      |      |      | kg |

|     |      |      |        |        |
|-----|------|------|--------|--------|
| ▲▲▲ | 40 m | 35 m | 30,5 m | 28,5 m |
| H+2 | -    | -    | 45,7   | 44,7   |
|     | -    | 45   | 42,7   | 41,7   |
| H+1 | 44,5 | 42   | 39,7   | 38,7   |
|     | 41,5 | 39   | 36,7   | 35,7   |
| H+0 | 38,5 | 36   | 33,7   | 32,7   |
|     | -    | -    | -      | -      |
|     | -    | -    | -      | -      |



|      |     |   |      |    |
|------|-----|---|------|----|
| 40 m | 3,1 | ▶ | 24,8 | m  |
| ▲▲▲  | ▲▲▲ |   | 2200 | kg |
| ▲▲▲  | ▲▲▲ |   | 2200 | kg |

|     |      |
|-----|------|
| ▲▲▲ | 40 m |
| ▲▲▲ | 35 m |
| H+2 | 44,7 |
|     | 41,7 |
| H+1 | 38,7 |
|     | 35,7 |
| H+0 | 32,7 |
|     | -    |
|     | -    |

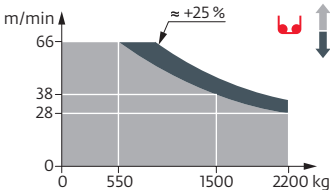


Mécanismes / Triebwerke / Mechanisms / Mecanismos / Meccanismi  
Mecanismos / Механизмы

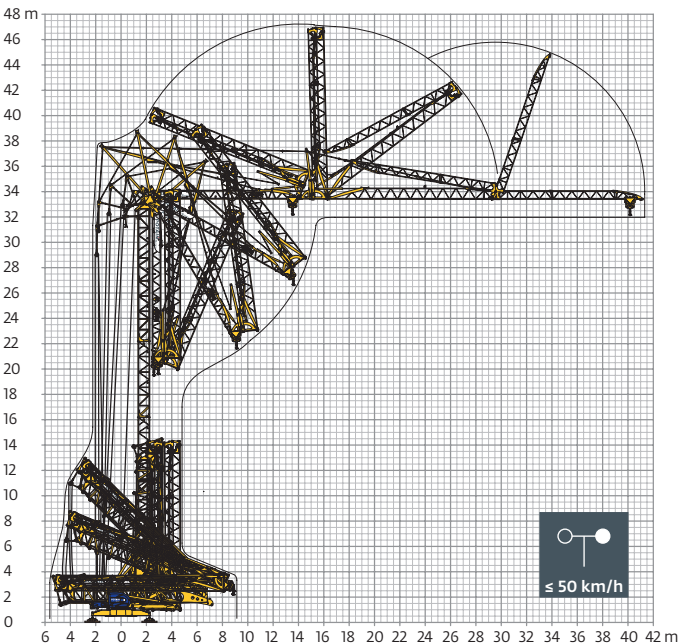
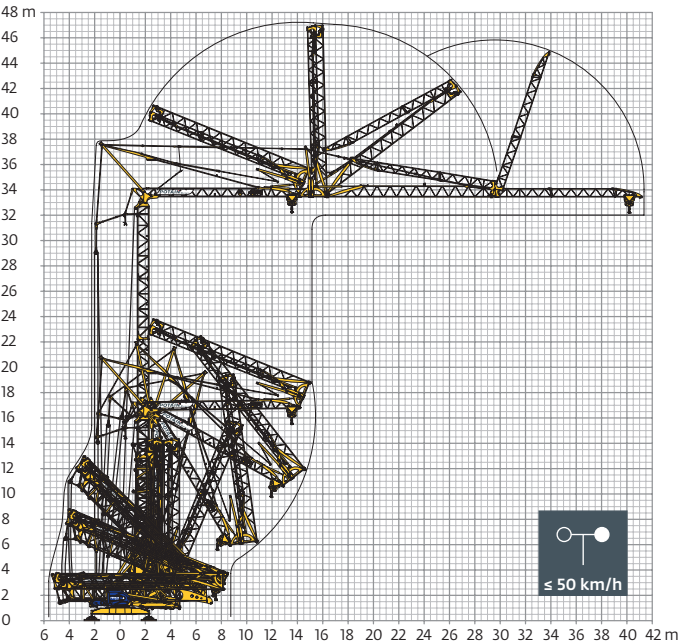
| 400 V - 50 Hz<br>480 V - 60 Hz |                     |                        |   |      |      |      |     |      |      |      |      |      | ch - PS<br>hp | kW  |
|--------------------------------|---------------------|------------------------|---|------|------|------|-----|------|------|------|------|------|---------------|-----|
|                                | 15 LVF 11<br>Optima | m/min                  | 3,5   | 18   | 28   | 38   | 66  | 1,8  | 9    | 14   | 19   | 33   | 15            | 11  |
|                                |                     | kg                     | 2200  | 2200 | 2200 | 1500 | 550 | 4000 | 4000 | 4000 | 3000 | 1100 |               |     |
|                                | 3 DVF 5             | m/min                  | 15 - 30 - 41 (1300 → 4000 kg)<br>15 - 30 - 45 (0 → 1300 kg) |      |      |      |     |      |      |      |      |      | 3             | 2,2 |
|                                | RVF 51<br>Optima+   | tr/min<br>U/min<br>rpm | 0 → 0,8   |      |      |      |     |      |      |      |      |      | 5,5           | 4   |
|                                |                     |                        |   |      |      |      |     |      |      |      |      |      |               |     |

| IEC 60204-32                                      | kVA    |
|---|--------|
| 400 V (+10% -10%) 50 Hz<br>480 V (+6% -10%) 60 Hz | 23 kVA |

15 LVF 11 Optima



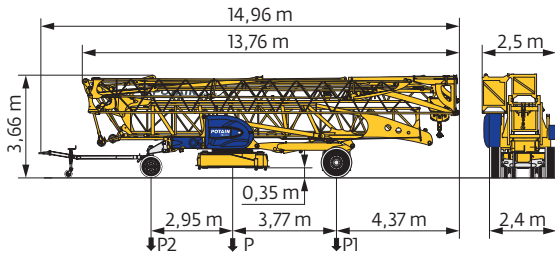
Montage / Montage / Erection / Montaje / Montaggio  
Montagem / Монтаж



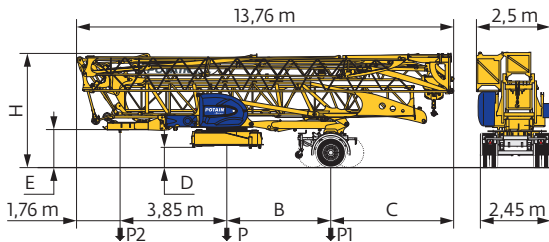


EN 14439 C25-D25  
EN 14439 C50-D50  
FEM 1.001-A3

Transport / Transport / Transport / Transporte / Trasporto  
Transporte / Транспортировка



|               | km/h | P (kg) | P1 (kg) | P2 (kg) |
|---------------|------|--------|---------|---------|
| DJ100/S120    | 10   | 16970  | 9540    | 7430    |
| DJ105/S125    | 25   | 17260  | 9750    | 7510    |
| ..... / ..... |      |        |         |         |



|               | km/h | B (m) | C (m) | D (m) | E (m) | H (m) | P (kg) | P1 (kg) | P2 (kg) |
|---------------|------|-------|-------|-------|-------|-------|--------|---------|---------|
| SL121/J135    | 25   | 3,77  | 4,37  | 0,77  | 1,3   | 4,06  | 17815  | 11525   | 6290    |
| SL122/J215M   | 80   | 3,21  | 4,93  | 0,66  | 1,2   | 3,96  | 18860  | 13320   | 5540    |
| ..... / ..... |      |       |       |       |       |       |        |         |         |

FR

DE

EN

ES

IT

PT

RU

|  |   |   |   |  |   |  |  |
|--|---|---|---|--|---|--|--|
|  | Rayon de giration   | Schwenk radius  | Rear slewing radius   | Radio de giro  | Raggio di rotazione   | Raio de rotação  | Задний габарит   |
|  | Nous consulter  | Auf Anfrage   | Consult us  | Consultarnos   | Consultateci  | Consultar-nos  | Проконсультируйтесь у нас  |
|  | Réactions en service  | Reaktionskräfte in Betrieb  | Reactions in service  | Reacciones en servicio   | Reazioni in servizio  | Reacções em serviço  | Реакция при работе   |
|  | Réactions hors service  | Reaktionskräfte außer Betrieb   | Reactions out of service  | Reacciones fuera de servicio   | Reazioni fuori servizio   | Reacções fora de serviço   | Реакция в покое  |
|  | Poids à vide, sans lest, sans trains de transport, avec flèche maxi. et hauteur standard. | Gewicht ohne Last, ohne Ballast, ohne Transportachsen, mit max. Auslager und Standardhöhe | Weight without load, without ballast, without transport axes, with max. jib and standard height | Peso en vacío, sin lastre, sin trenes de transporte con flecha y altura estandar | Peso a vuoto, senza zavorra, senza assali di trasporto, con braccio max e altezza standard. | Peso em vazio, sem lastro, sem eixos de transporte com lança máxima e altura standard. | Вес без груза, без балласта, без осей для транспортировки, с максимальным вылетом стрелы и стандартной высотой |
|  | Poids total du lest   | Ballast-Gesamtgewicht   | Total ballast weight  | Peso total del lastre  | Peso totale della zavorra   | Peso total do lastro   | Общий вес балласта   |
|  | Levage  | Heben   | Hoisting  | Elevación  | Sollevamento  | Elevação   | Подъем   |
|  | Distribution  | Katzfahren  | Trolleying  | Distribución   | Distribuzione   | Distribuição   | Перемещение по стреле  |
|  | Orientation   | Schwenken   | Slewing   | Orientación  | Rotazione   | Rotação  | Поворот  |
|  | Translation   | Kranfahren  | Travelling  | Traslación   | Traslazione   | Translação   | Перемещение крана  |
|  | Puissance nominale  | Nennleistung  | Rated power   | Potencia nominal   | Potenza nominale  | Potência nominal   | Номинальная мощность   |

|  |  |  |   |  |   |  |   |
|--|--|--|---|--|---|--|---|
|  | Document commercial non contractuel. Pour toute information technique se référer à la notice correspondante. | Unverbindliches Vertriebsdokument. Für technische Informationen, siehe die entsprechenden Anweisungen. | This commercial document is not legally binding. For any technical information, please refer to the corresponding instructions. | Documento commercial no contractual. Para cualquier información técnica, ver la noticia correspondiente. | Documento commerciale non vincolante, per tutte le informazioni tecniche fare riferimento al catalogo istruzioni. | Documento comercial não contratual. Para qualquer informação técnica complementar consultar as respectivas instruções. | Этот коммерческий документ не является юридически обязательным. Для получения технической информации, см. соответствующие инструкции. |
|--|--|--|---|--|---|--|---|



**Manitowoc - Americas**  
**Manitowoc, Wisconsin, USA**  
Tel: +1 920 684 6621  
Fax: +1 920 683 6277

**Shady Grove, Pennsylvania, USA**  
Tel: +1 717 597 8121  
Fax: +1 717 597 4062

**Manitowoc - Europe, Middle East & Africa**  
**Ecully, France**  
Tel: +33 (0)4 72 18 20 20  
Fax: +33 (0)4 72 18 20 00

**Manitowoc - Asia & Pacific**  
**Shanghai, China**  
Tel: +86 21 6457 0066  
Fax: +86 21 6457 4955

Ref. Igo T70 2006 46 - 5